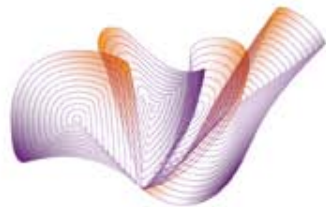


# ArchiMate: Past, Present and Future



novay

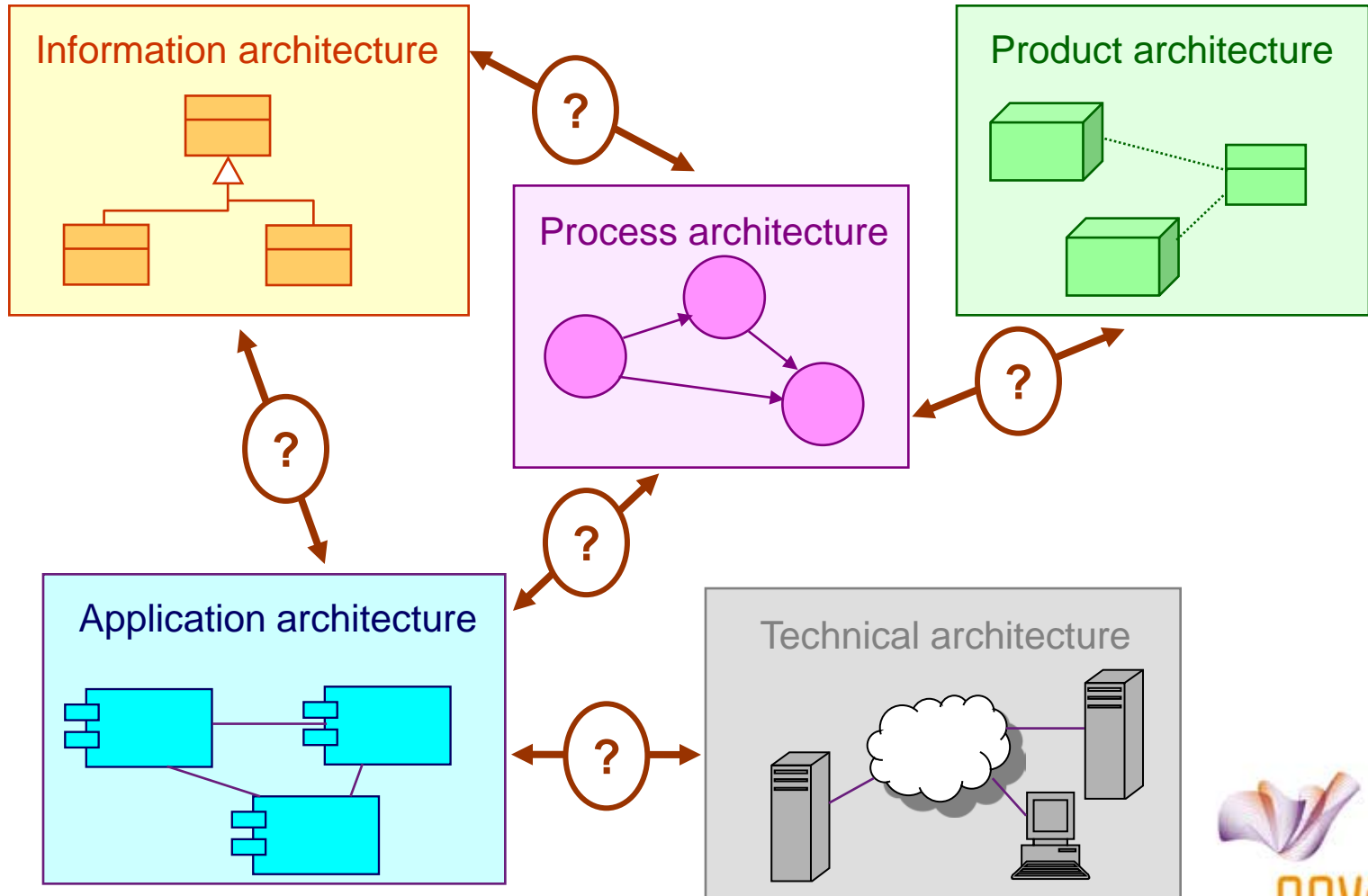
*Marc Lankhorst  
Principal Researcher  
Enterprise Architecture*

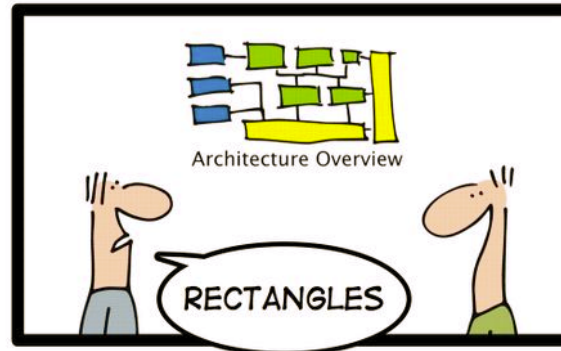
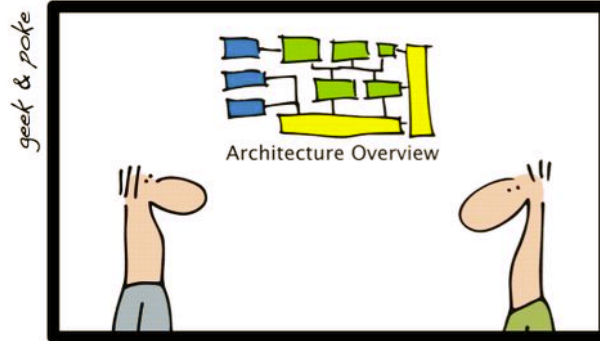
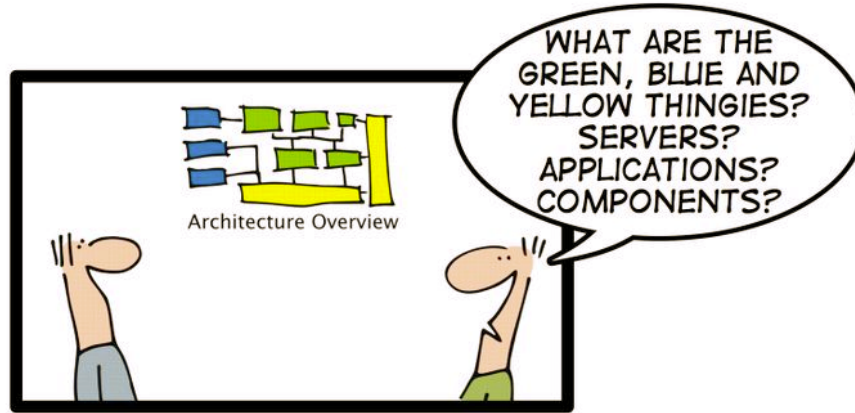
*NAF ALV, Utrecht, May 19, 2011*

# Overview

- Introduction & background
- The ArchiMate modeling language
- ArchiMate and TOGAF
- Future extensions and improvements to ArchiMate

# Enterprise Architecture: *Coherence*





# The ArchiMate Research Project

- 2½ years, July 2002 - December 2004
- approx. 35 man-years, 4 million euro
- Consortium of companies and knowledge institutes
- Directed by Novay (then still Telematica Instituut)
- Goal: *well-founded, practical, and vendor-independent standard* for enterprise architecture modeling



Universiteit Leiden

Belastingdienst



Radboud Universiteit Nijmegen



novay

# Main Benefits of ArchiMate

- *Lean and mean* language:
  - just enough concepts, not bloated to include every possible detail
- Well-founded concepts & models give *precision*
  - clear communication about architectures
  - get away from the ‘fuzzy pictures’ image
- Links to *existing approaches*
  - UML, BPMN, TOGAF
- International *vendor-independent standard*
  - The Open Group
- *Tool support*
  - several tools available





# Layers and Aspects

Business			
Application			
Technology			

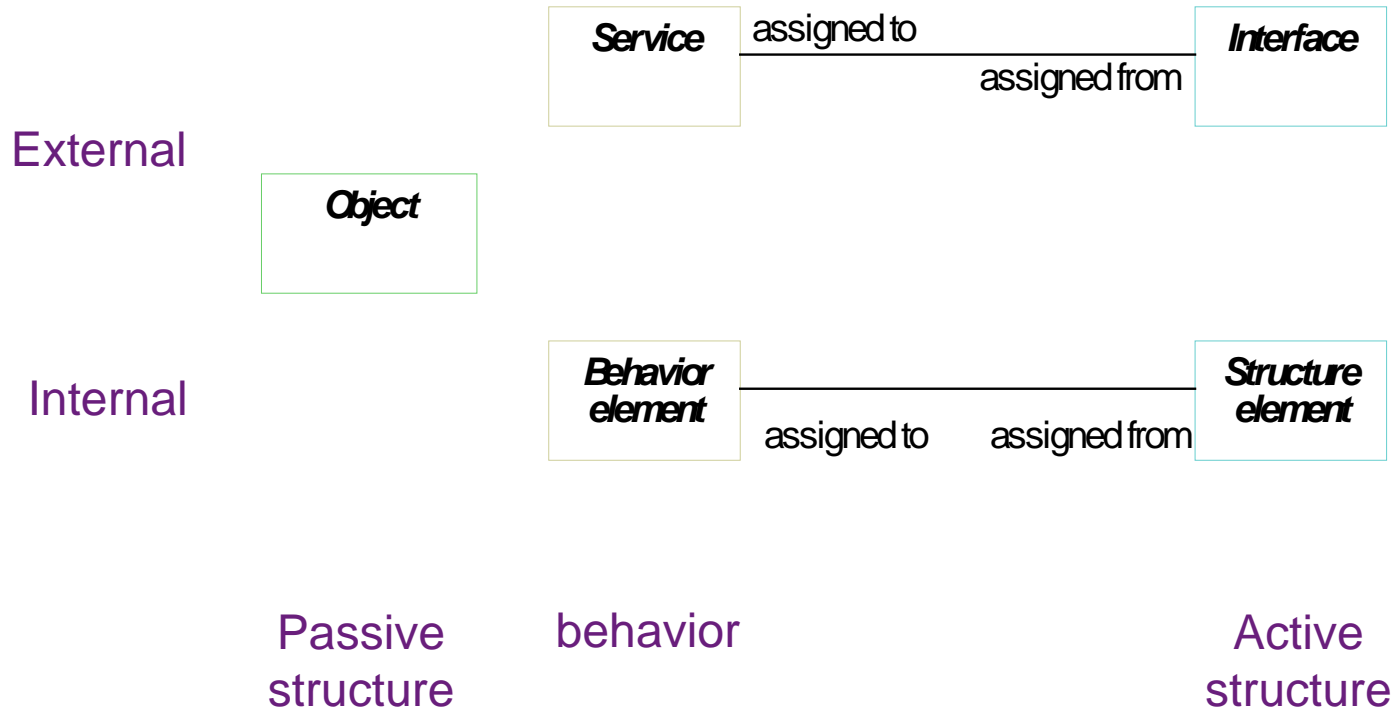
Passive  
structure  
“object”

Behavior  
“verb”

Active  
structure  
“subject”



# Generic Structure at Each Layer



Similar concepts at each layer make the language easier to learn and more consistent in use

(cf. Fred Brooks' "conceptual integrity")

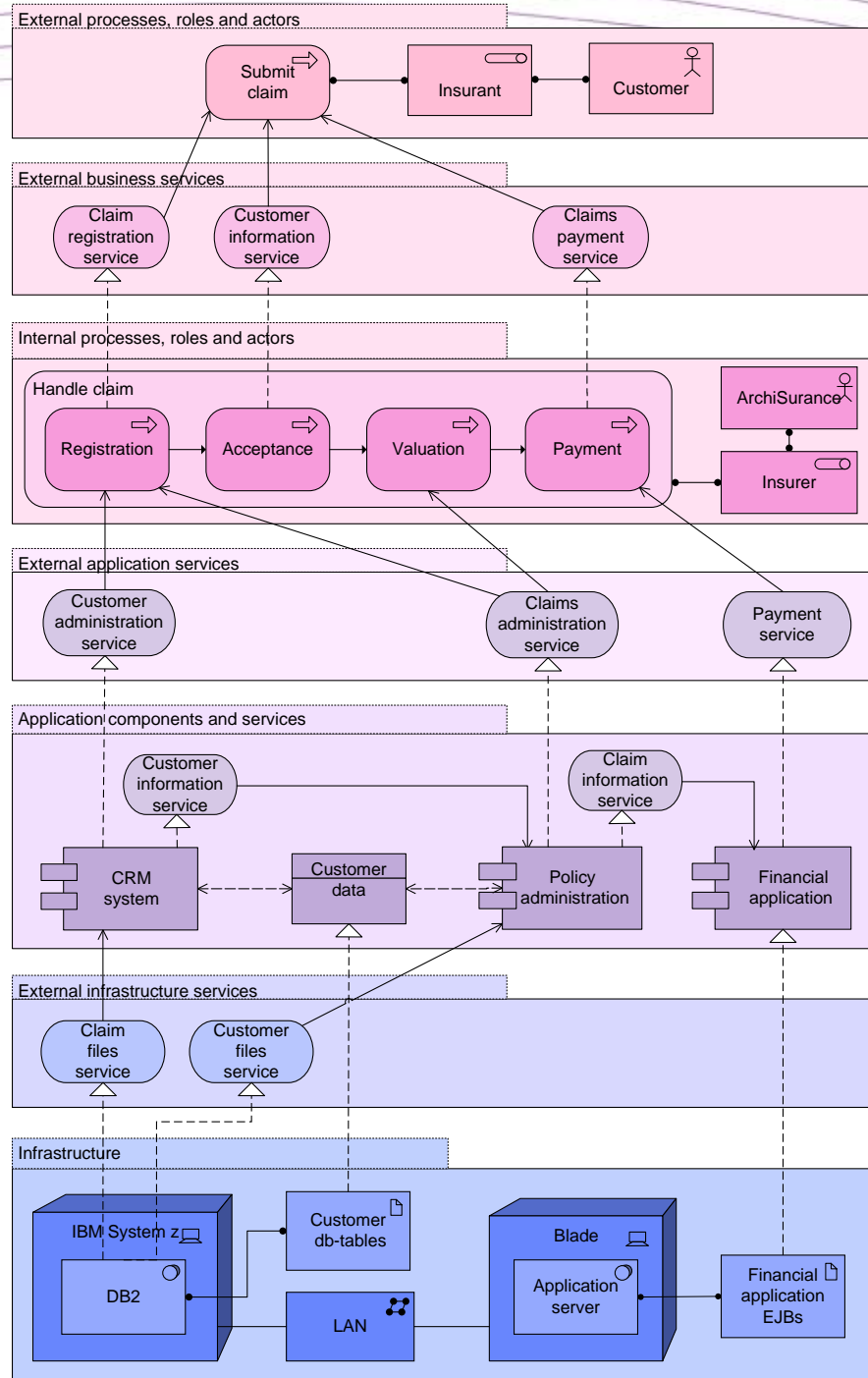


# Layered Architecture

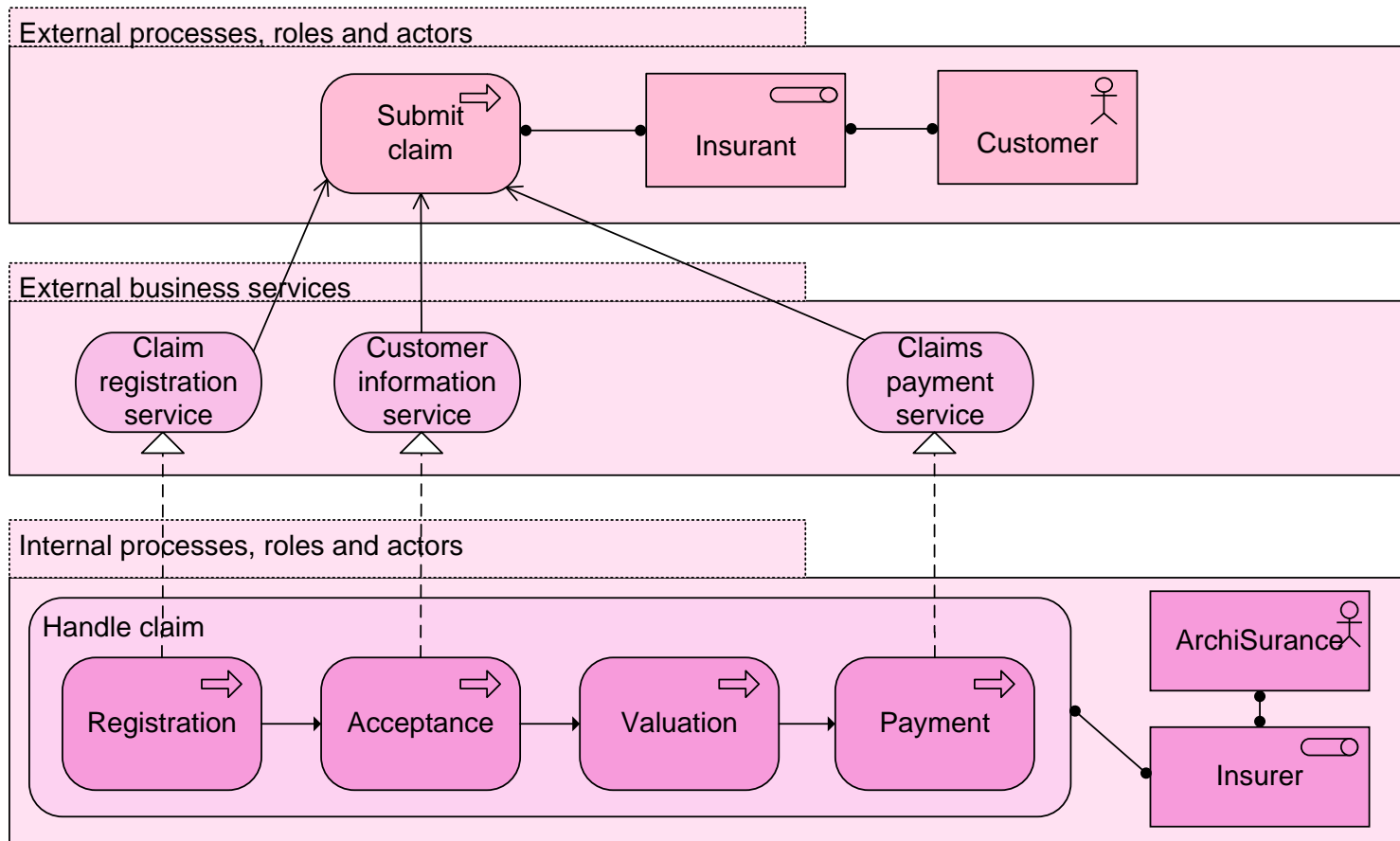
Business layer

Application layer

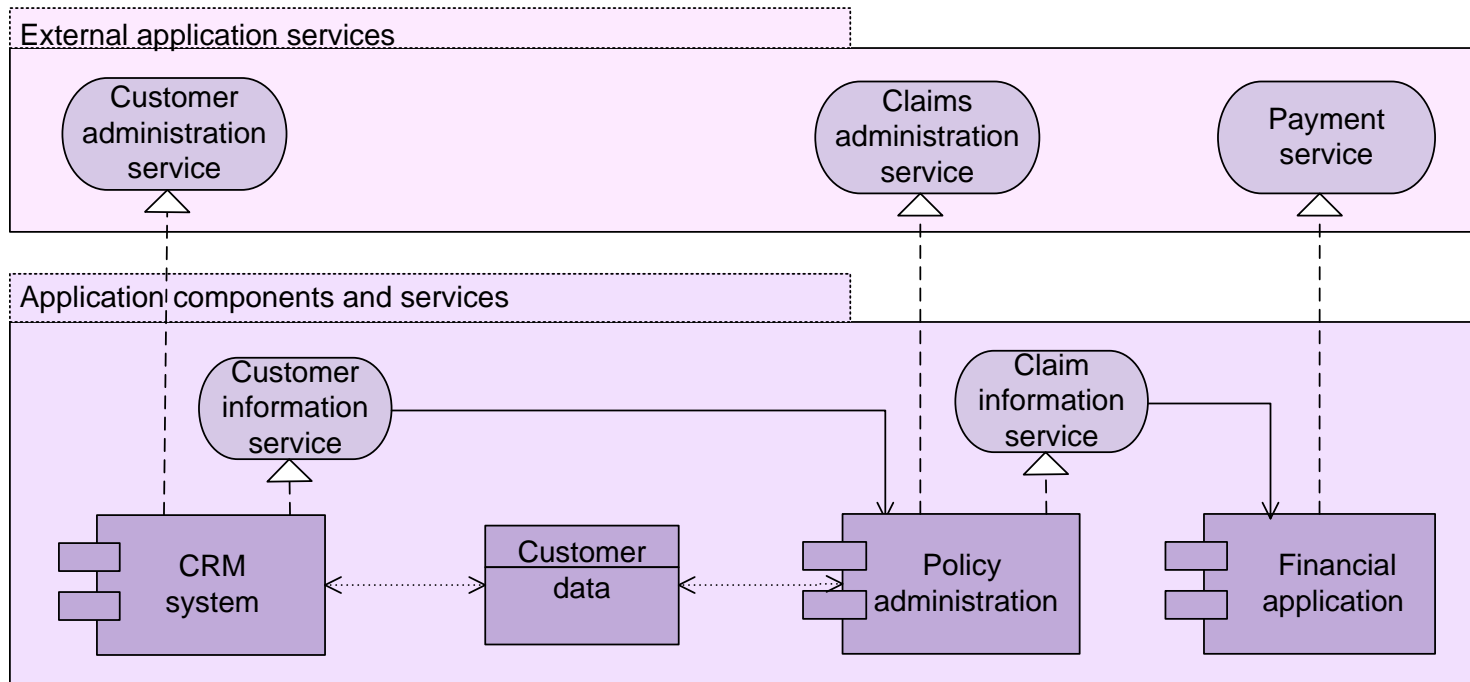
Technology layer



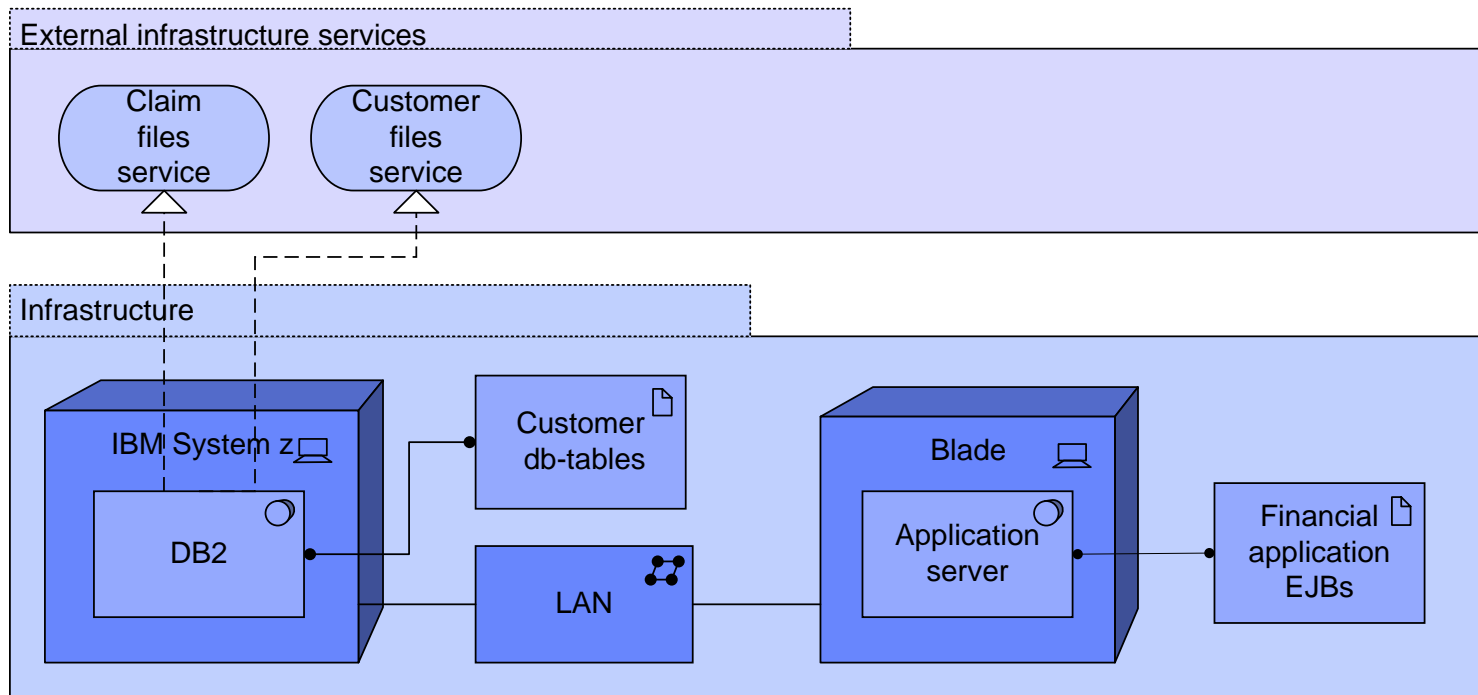
# Business Layer



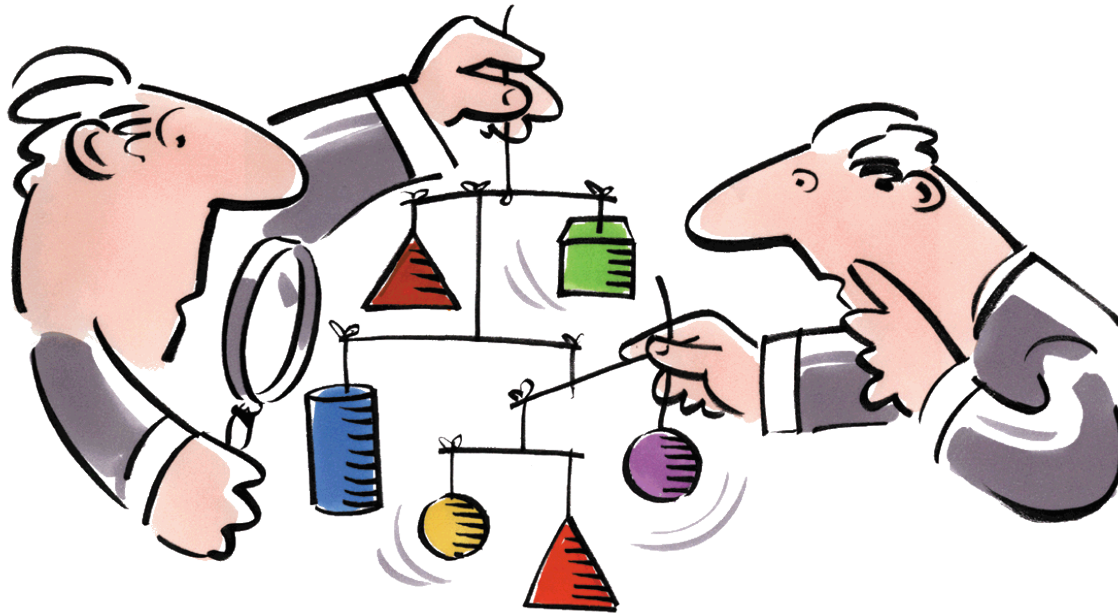
# Application Layer



# Technology Layer

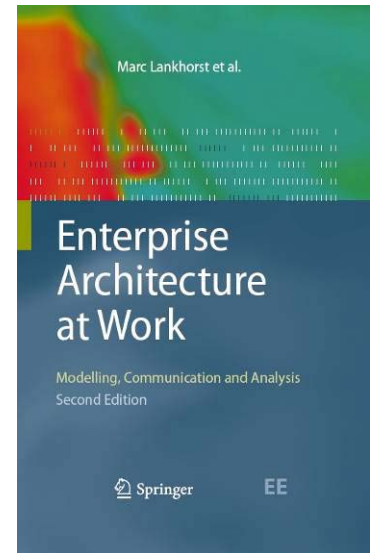


# ArchiMate Usage in Practice



# ArchiMate in Practice

- *Applications* at many organisations
  - Banks, insurance companies, government, industry, etc.
- *Consultants*
  - Ordina, Logica, Capgemini, Sogeti, Getronics, etc.
- *Tools*
  - Supported by > 10 tools
- *Education*
  - Used by several universities and other educational institutes





# Active User Community

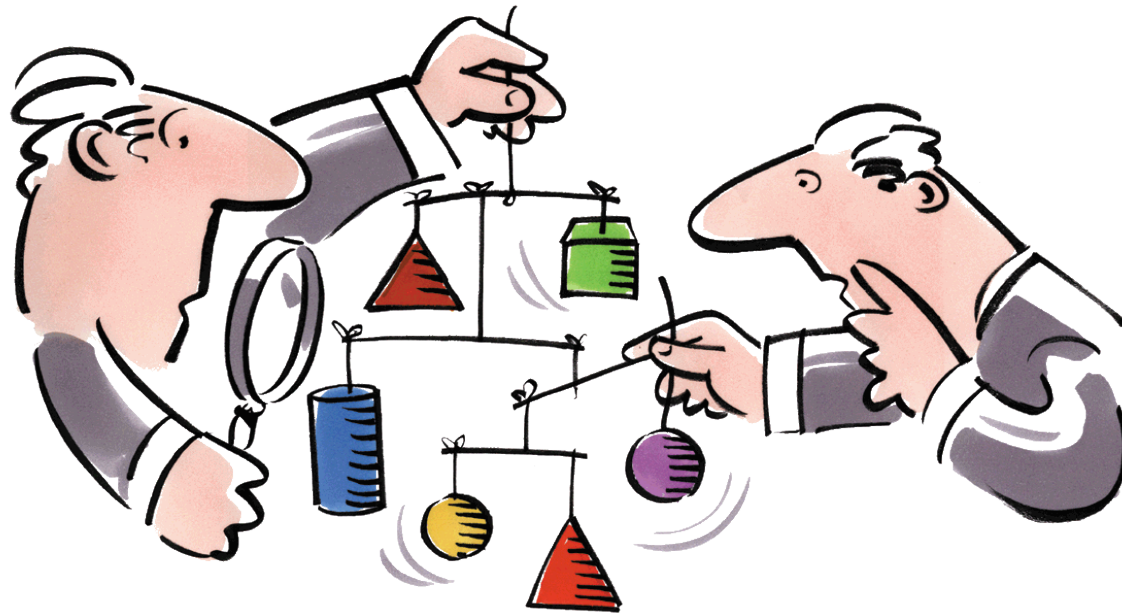
- NAF working group
  - <http://www.naf.nl/nl/werkgroepen/archimate.html>
  - chair: Jan van Santbrink
- ArchiMate Forum of The Open Group
  - <http://www.opengroup.org/archimate>
- ArchiMate LinkedIn group
  - <http://www.linkedin.com/groups/ArchiMate-50758>

# Tool Support for ArchiMate

- Commercial tools:
  - BiZZdesign: Architect
  - Software AG: ARIS ArchiMate Modeler
  - Casewise: Corporate Modeler
  - IBM: System Architect
  - Troux: Metis (old version)
  - Agilense: EA Web Modeler
  - Sparx: Enterprise Architect
  - Avolution: Abacus
  - Promis: EVA Netmodeler
  - Visual Paradigm: Agilian
- Open source: Archi (Bolton Univ.), [archi.cetis.ac.uk](http://archi.cetis.ac.uk)
- Microsoft Visio, Omnigraffle, [www.archimate.org](http://www.archimate.org)



# The Future of ArchiMate



# ArchiMate and The Open Group

- ArchiMate now under the aegis of The Open Group
  - Official ArchiMate 1.0 standard
- Original goal, *a vendor-independent standard for enterprise architecture modeling*, is now a reality!
- ArchiMate Forum within The Open Group
  - responsible for standardization, further development of the language, PR, etc.

# Improvements to ArchiMate 1.0

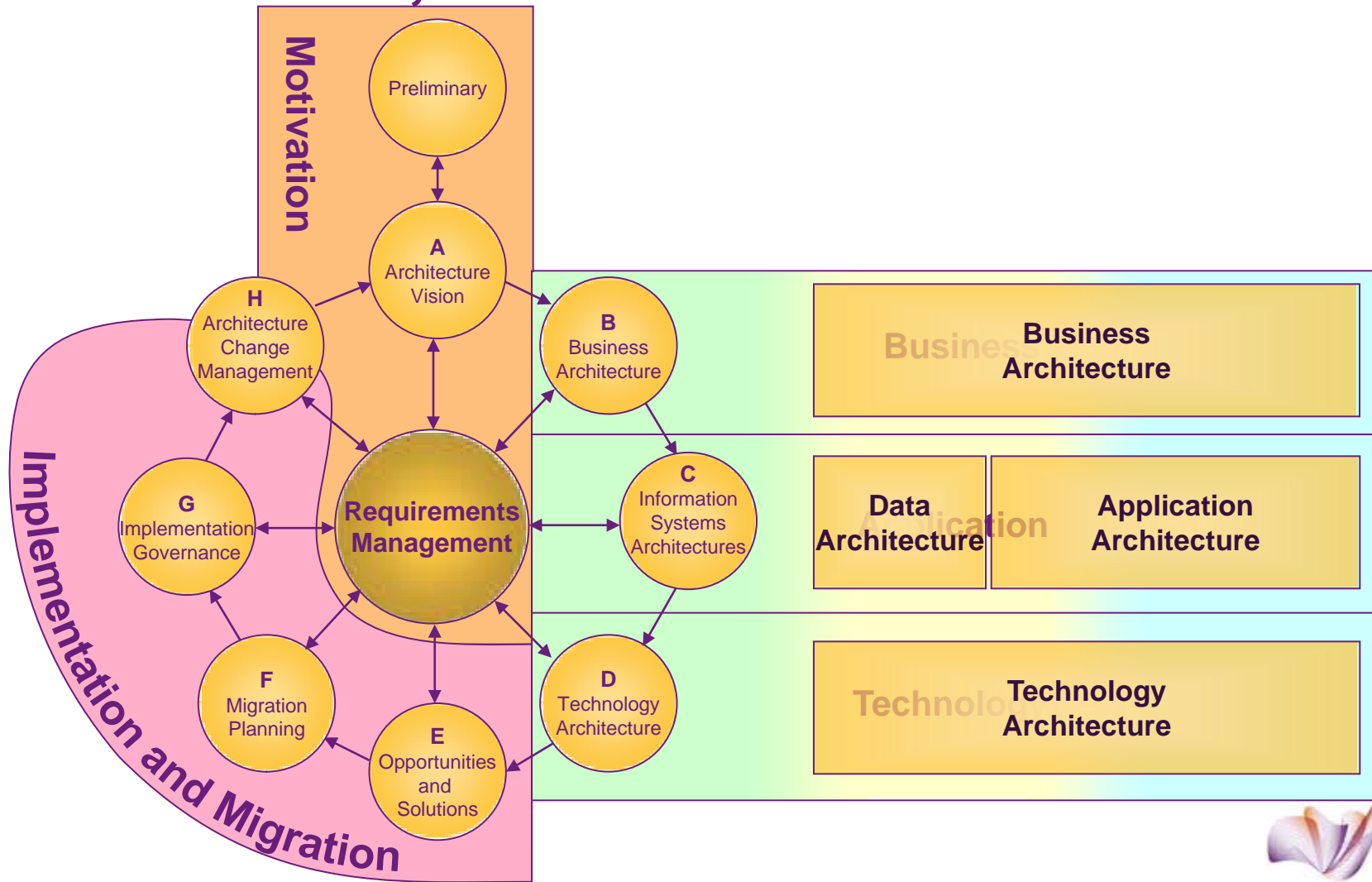
Improvements in the proposed next version of the language:

- Better definitions of some concepts
  - A.o. based on recommendations by the NAF ArchiMate working group
- Addition of a 'Location' concept

# ArchiMate and TOGAF

- TOGAF: The Open Group Architecture Framework
  - Architecture Development Method (ADM) provides a way of working
  - Methodical support, but no description technique
- ArchiMate:
  - a description language
  - but no prescribed way of working

# TOGAF, ArchiMate and Extensions

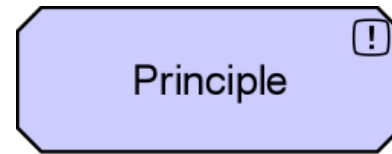
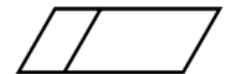
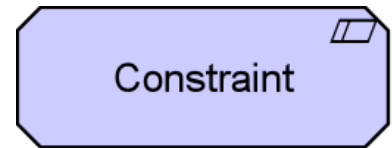
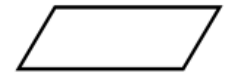
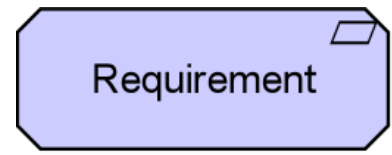
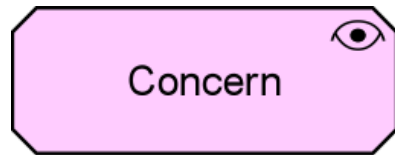


TOGAF ADM

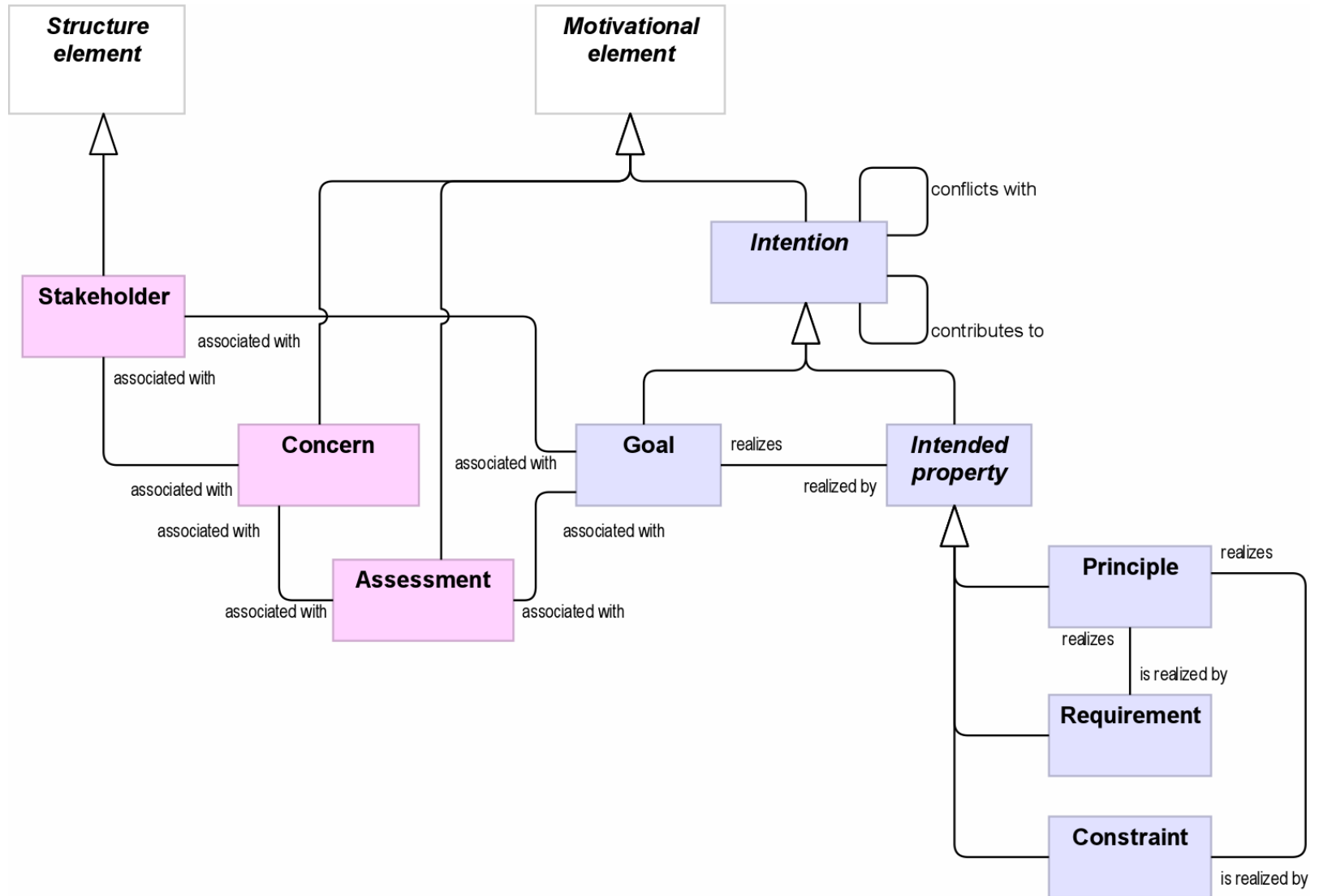
ArchiMate



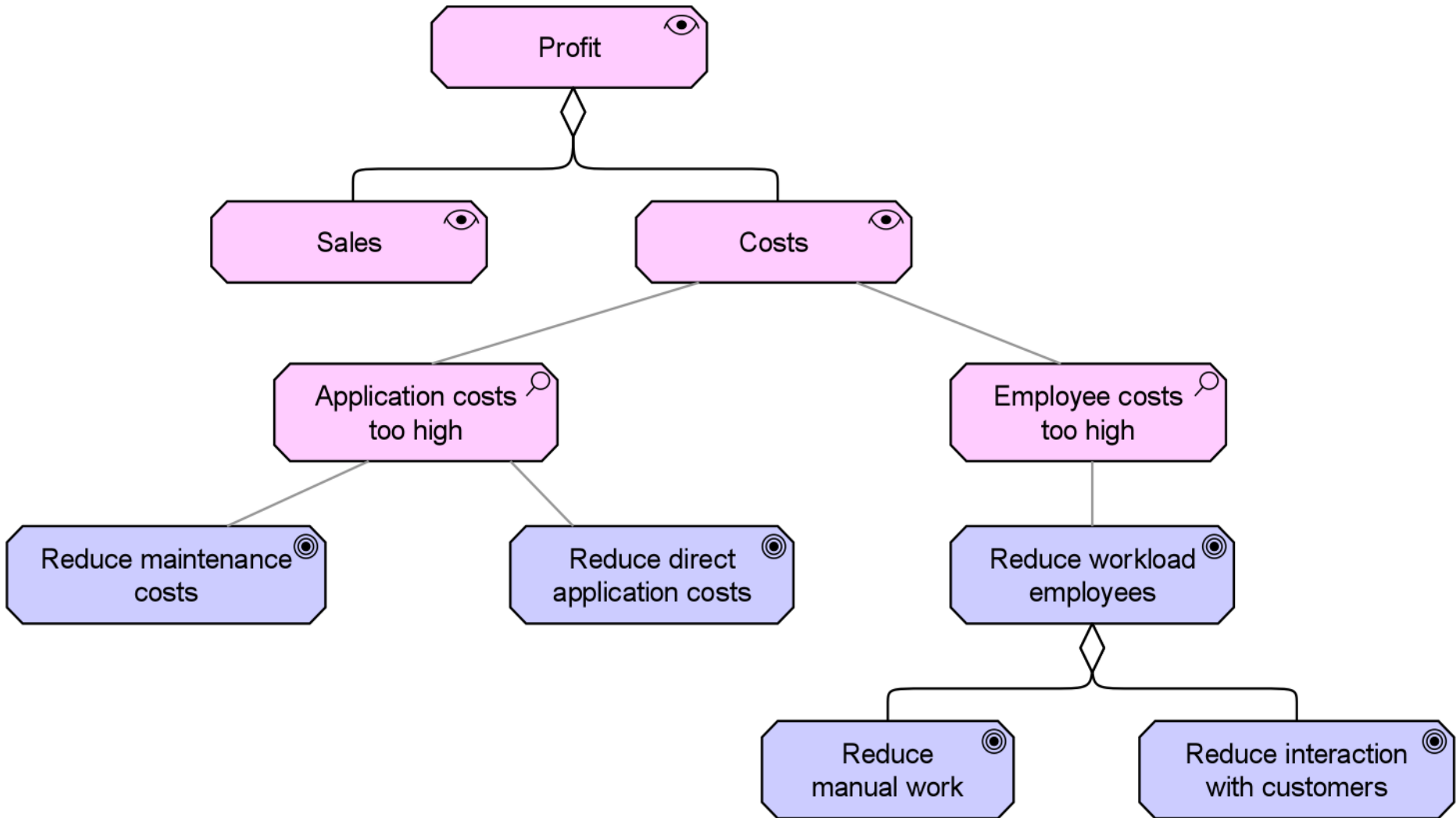
# Motivation Concepts



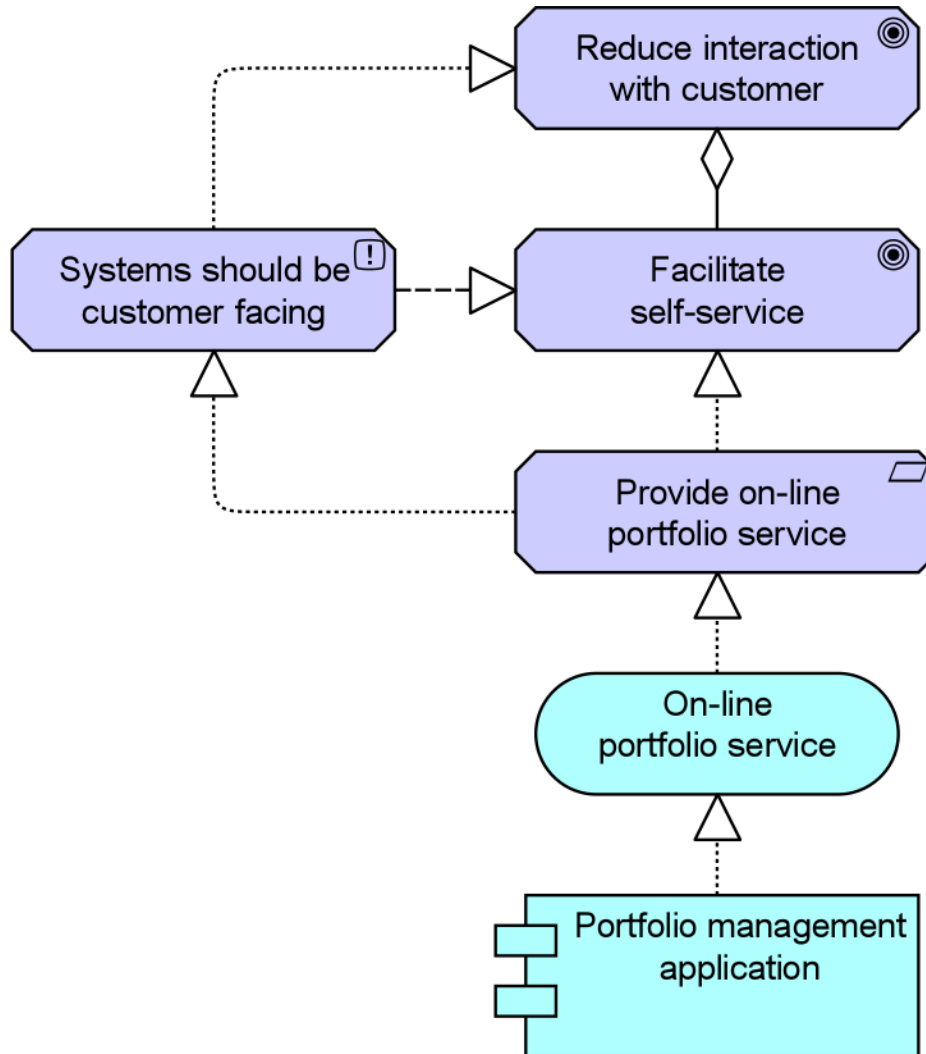
# Motivation Metamodel



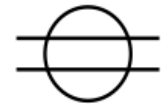
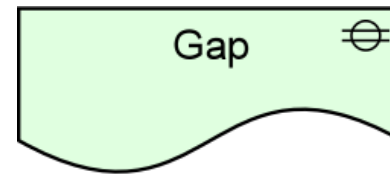
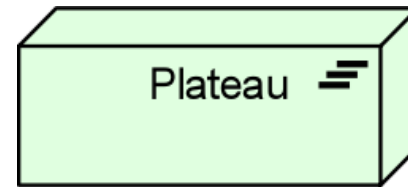
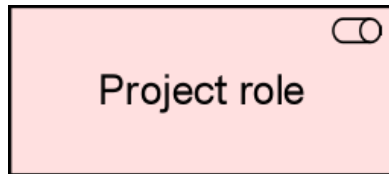
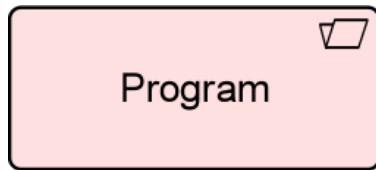
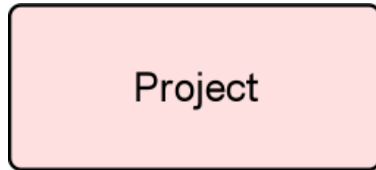
# Example



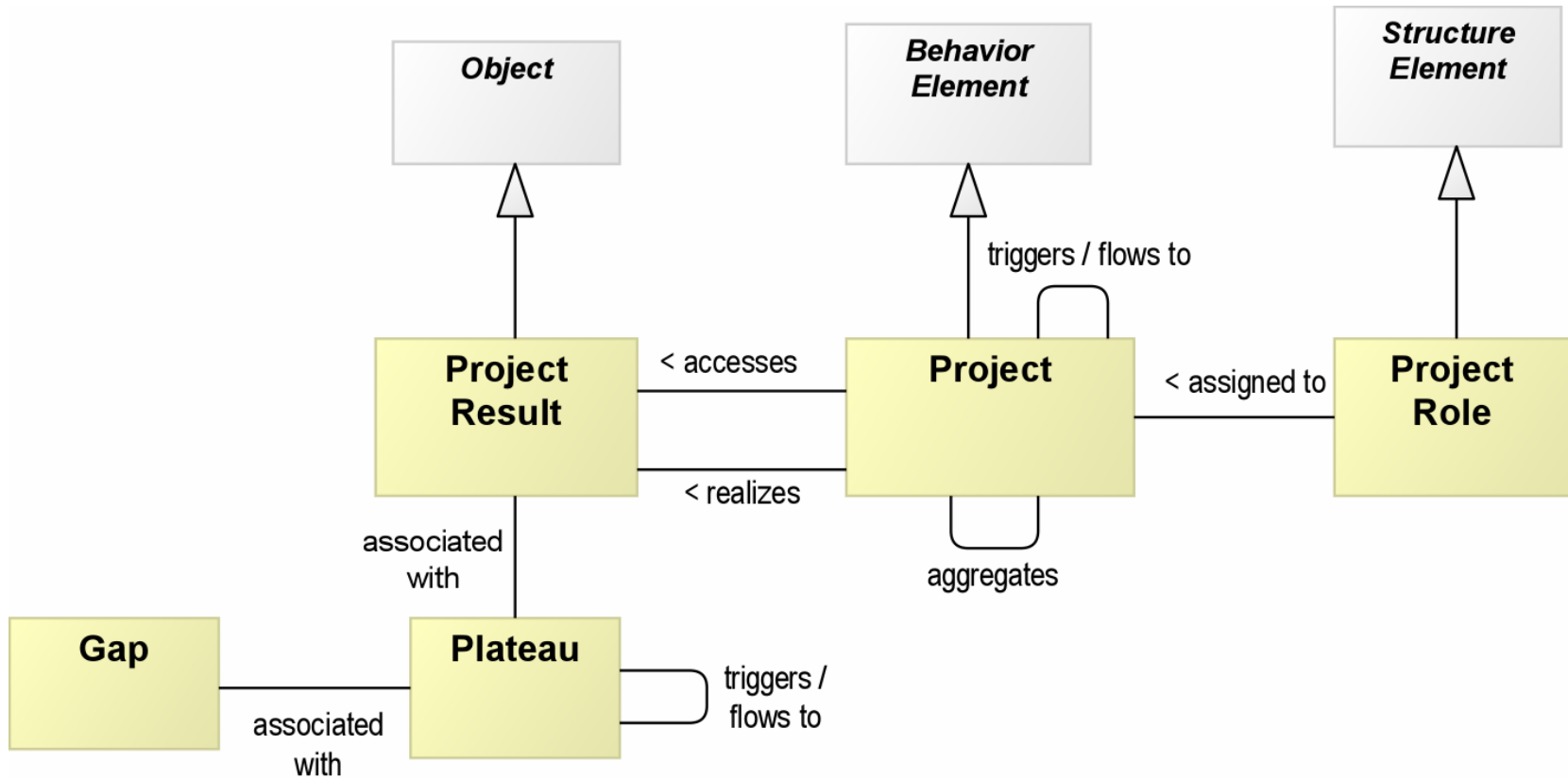
# Another Example



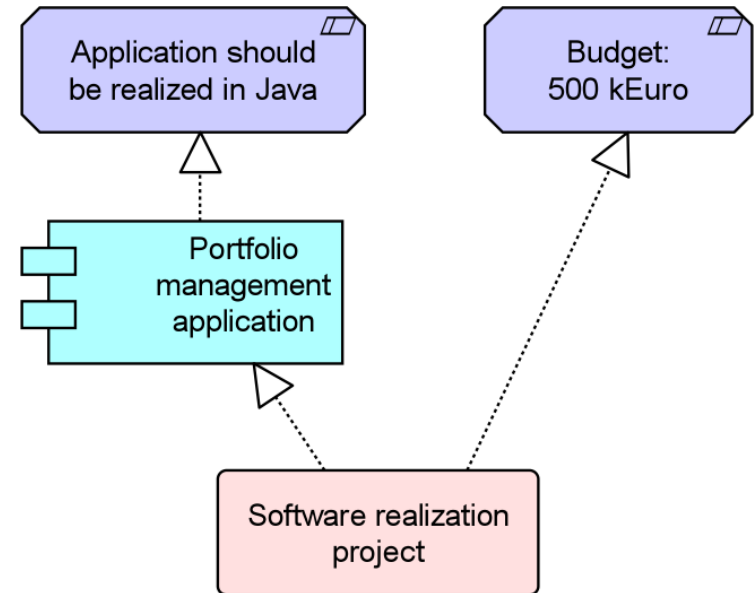
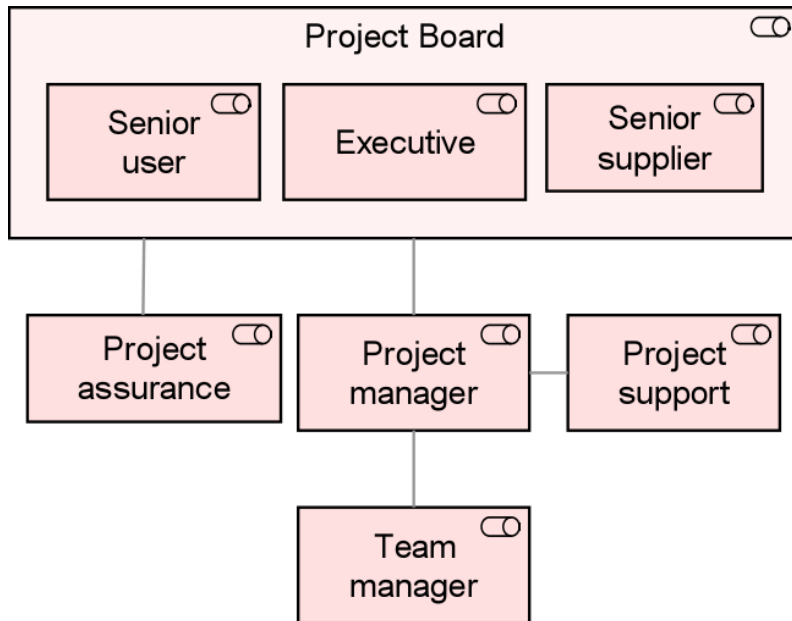
# Implementation & Migration Concepts



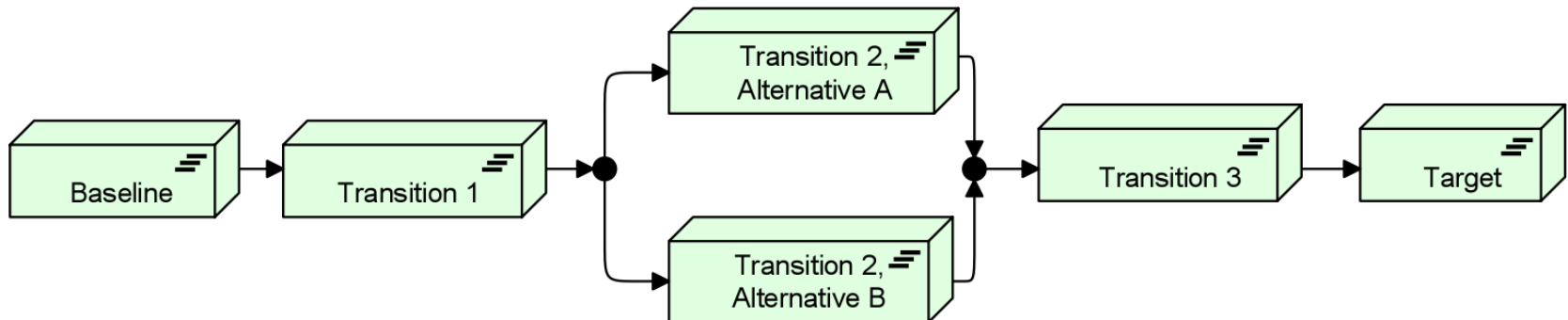
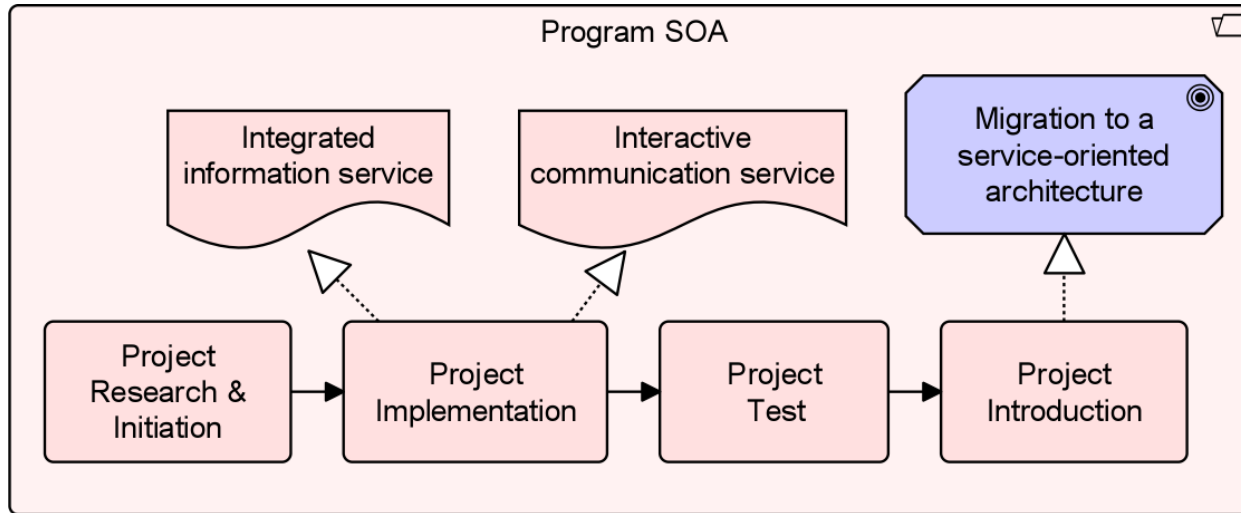
# Implementation Metamodel



# Examples



# More Examples



# Time Frame

- ArchiMate version 2.0 proposal is being prepared now
  - Improvements based on feedback from practice
  - Proposed extensions on Motivation and Planning & Migration
- Draft proposal submitted to The Open Group in May
- The official company review process has just started within The Open Group's ArchiMate Forum





# More Information?



Most ArchiMate results are available through the website:

[www.archimate.org](http://www.archimate.org)

See also The Open Group's ArchiMate Forum:

[www.opengroup.org/archimate](http://www.opengroup.org/archimate)



Marc Lankhorst

Novay

P.O. Box 589

7500 AN Enschede

The Netherlands

Marc Lankhorst@novay.nl

053-4850456

